



# Certificate of Analysis

CANNABUSINESS LABORATORIES, LLC

**Customer:**  
Cornbread Hemp

Sample ID **231229005**  
Order Number **CB231229002**  
Sample Name **Whole Flower CBDa Oil**  
**1500mg**

Received Date **12/29/2023**  
COA Released **1/10/2024**

External Sample ID **0830**  
Batch Number **12282324**

Comments

Product Type **Other**  
Sample Type **Other**

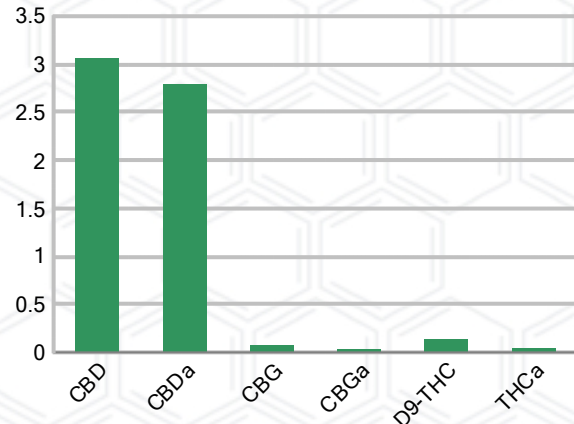
## CANNABINOID PROFILE

Analyte	LOQ (%)	% Weight	mg/g
CBC	0.01	ND	ND
CBD	0.01	3.060	30.60
CBDa	0.01	2.791	27.91
CBDV	0.01	ND	ND
CBG	0.01	0.078	0.781
CBGa	0.01	0.028	0.281
CBN	0.01	ND	ND
d8-THC	0.01	ND	ND
d9-THC	0.01	0.133	1.330
THCa	0.01	0.047	0.466
<b>Total Cannabinoids</b>		<b>6.136</b>	<b>61.36</b>
<b>Total Potential THC</b>		<b>0.174</b>	<b>1.739</b>
<b>Total Potential CBD</b>		<b>5.507</b>	<b>55.07</b>
<b>Total Potential CBG</b>		<b>0.103</b>	<b>1.028</b>
<b>Ratio of Total Potential CBD to Total Potential THC</b>			<b>31.65 : 1</b>
<b>Ratio of Total Potential CBG to Total Potential THC</b>			<b>0.59 : 1</b>

## SAMPLE IMAGE



## CANNABINOIDS % Weight



\*Total Cannabinoids refers to the sum of all cannabinoids detected.

\*Total Potential CBD = (0.877 x CBDa) + CBD. \*Total Potential THC = (0.877 x THCa) + THC. \*Total Potential CBG = (0.877 x CBGa) + CBG.

\*Total Potential THC/CBD are calculated to take into account the loss of an acid group during decarboxylation.



*J. Hobgood*  
Laboratory Manager  
SIGNATURE

Jamie Hobgood  
LABORATORY MANAGER

01/10/2024 7:56 PM  
DATE

This product has been tested by CannaBusiness Laboratories using validated testing methodologies and a quality system. Values reported relate only to the product tested. CannaBusiness Laboratories makes no claims as to the efficacy, safety, or other risks associated with any detected or non-detected levels of any compounds reported herein. This Certificate shall not be reproduced except in full, without the written permission of CannaBusiness Laboratories. Photo is of sample received by the lab and may vary from final packaging. The results apply to the sample as received.



# Certificate of Analysis

## CANNABUSINESS LABORATORIES, LLC

### Customer

Cornbread Hemp



**Sample Name:** Whole Flower CBDa Oil  
1500mg

**Sample ID:** 231229005

**Order Number:** CB231229002

**Product Type:** Other

**Sample Type:** Other

**Received Date:** 12/29/2023

**Batch Number:** 12282324

**COA released:** 01/10/2024 7:56 PM

Potency (mg/g)			
Date Tested: 01/01/2024		Method: CB-SOP-028	
Instrument:			
<b>0.174 %</b>	<b>5.507 %</b>	<b>6.136 %</b>	<b>61.36 mg/g</b>
Total THC	Total CBD	Total Cannabinoids	Total Cannabinoids

Analyte	Result	Units	LOQ	Result	Units
CBC (Cannabichromene)	ND	%	0.010	ND	mg/g
CBD (Cannabidiol)	3.060	%	0.010	30.60	mg/g
CBDa (Cannabidiolic Acid)	2.791	%	0.010	27.91	mg/g
CBDV (Cannabidivarin)	ND	%	0.010	ND	mg/g
CBG (Cannabigerol)	0.078	%	0.010	0.781	mg/g
CBGa (Cannabigerolic Acid)	0.028	%	0.010	0.281	mg/g
CBN (Cannabinol)	ND	%	0.010	ND	mg/g
D8-THC (D8-Tetrahydrocannabinol)	ND	%	0.010	ND	mg/g
D9-THC (D9-Tetrahydrocannabinol)	0.133	%	0.010	1.330	mg/g
THCa (Tetrahydrocannabinolic Acid)	0.047	%	0.010	0.466	mg/g

Terpenoids					
Date Tested: 01/02/2024			Method: CB-SOP-026		
Instrument:					

Analyte	Result	Unit	LOQ	Result	Unit
alpha-Bisabolol	<LOQ	mg/g	0.100	<LOQ	%
alpha-humulene	0.144	mg/g	0.100	0.0144	%
alpha-pinene	<LOQ	mg/g	0.100	<LOQ	%
alpha-terpinene	<LOQ	mg/g	0.100	<LOQ	%
beta-caryophyllene	0.449	mg/g	0.100	0.0449	%
Beta-myrcene	<LOQ	mg/g	0.100	<LOQ	%
Beta-pinene	<LOQ	mg/g	0.100	<LOQ	%
cis-Nerolidol	<LOQ	mg/g	0.100	<LOQ	%
Camphene	<LOQ	mg/g	0.100	<LOQ	%
d-Limonene	<LOQ	mg/g	0.100	<LOQ	%
delta-3-Carene	<LOQ	mg/g	0.100	<LOQ	%
Eucalyptol	<LOQ	mg/g	0.100	<LOQ	%
gamma-Terpinene	<LOQ	mg/g	0.100	<LOQ	%
Geraniol	<LOQ	mg/g	0.100	<LOQ	%
Guaiol	<LOQ	mg/g	0.100	<LOQ	%
Isopulegol	<LOQ	mg/g	0.100	<LOQ	%
Linalool	<LOQ	mg/g	0.100	<LOQ	%
Ocimene (mixture of isomers)	<LOQ	mg/g	0.100	<LOQ	%
p-Isopropyltoluene (p-Cymene)	<LOQ	mg/g	0.100	<LOQ	%
trans-beta-Ocimene	<LOQ	mg/g	0.100	<LOQ	%
trans-Nerolidol	<LOQ	mg/g	0.100	<LOQ	%
Terpinolene	<LOQ	mg/g	0.100	<LOQ	%

Pesticides		
Date Tested: 01/02/2024		Method: CB-SOP-025
Instrument:		

Analyte	Result	Units	LOQ	Analyte	Result	Units	LOQ
Acephate	ND	ppm	0.010	Acetamidrid	ND	ppm	0.010
Aldicarb	ND	ppm	0.010	Azoxystrobin	ND	ppm	0.010
Bifenazate	ND	ppm	0.010	Bifenthrin	ND	ppm	0.100
Boscalid	ND	ppm	0.010	Carbaryl	ND	ppm	0.010
Carbofuran	ND	ppm	0.010	Chlorantranilprole	ND	ppm	0.010
Chlorpyrifos	ND	ppm	0.010	Clofentezine	ND	ppm	0.010
Coumaphos	ND	ppm	0.010	Daminozide	ND	ppm	0.010
Diazinon	ND	ppm	0.010	Dichlorvos	ND	ppm	0.100
Dimethoate	ND	ppm	0.010	Etofenprox	ND	ppm	0.010
Etoxazole	ND	ppm	0.010	Fenhexamid	ND	ppm	0.010
Fenoxycarb	ND	ppm	0.010	Fenpyroximate	ND	ppm	0.010
Fipronil	ND	ppm	0.010	Flonicamid	ND	ppm	0.100
Fludioxonil	ND	ppm	0.010	Hexythiazox	ND	ppm	0.010
Imazalil	ND	ppm	0.010	Imidacloprid	ND	ppm	0.010
Malathion	ND	ppm	0.010	Metalaxyl	ND	ppm	0.010

NT = Not tested, ND = Not detected; LOQ = Limit of Quantitation; <LOQ = Detected; >ULOL = Above upper limit of linearity; CFU/g = Colony forming units per 1 gram; TNTC = Too numerous to count

This product has been tested by CannaBusiness Laboratories using validated testing methodologies and a quality system. Values reported relate only to the product tested. CannaBusiness Laboratories makes no claims as to the efficacy, safety, or other risks associated with any detected or non-detected levels of any compounds reported herein. This Certificate shall not be reproduced except in full, without the written permission of CannaBusiness Laboratories. Photo is of sample received by the lab and may vary from final packaging. The results apply to the sample as received.



# Certificate of Analysis

## CANNABUSINESS LABORATORIES, LLC

Pesticides								
Date Tested: 01/02/2024			Method: CB-SOP-025			Instrument:		

Analyte	Result	Units	LOQ	Result	Analyte	Result	Units	LOQ	Result
Methiocarb	ND	ppm	0.010		Methomyl	ND	ppm	0.010	
Myclobutanil	ND	ppm	0.010		Naled	ND	ppm	0.010	
Oxamyl	ND	ppm	0.010		Paclobutrazol	ND	ppm	0.010	
Phosmet	ND	ppm	0.010		Prallethrin	ND	ppm	0.010	
Propiconazole	ND	ppm	0.010		Propoxur	ND	ppm	0.010	
Pyrethrin I	ND	ppm	0.010		Pyrethrin II	ND	ppm	0.010	
Pyridaben	ND	ppm	0.010		Spinetoram	ND	ppm	0.010	
Spiromesifen	ND	ppm	0.010		Spirotetramat	ND	ppm	0.010	
Tebuconazole	ND	ppm	0.010		Thiacloprid	ND	ppm	0.010	
Thiamethoxam	ND	ppm	0.010		Trifloxystrobin	ND	ppm	0.010	
Ethoprophos	ND	ppm	0.010		Kresoxym-methyl	ND	ppm	0.010	
Permethrins	ND	ppm	0.010		Piperonyl Butoxide	ND	ppm	0.010	
Spinosyn A	ND	ppm	0.010		Spiroxamine-1	ND	ppm	0.010	
AbamectinB1a	ND	ppm	0.010		Spinosyn D	ND	ppm	0.010	

Mycotoxins								
Date Tested: 01/02/2024			Method: CB-SOP-025			Instrument:		

Analyte	Result	Units	LOQ	Result	Analyte	Result	Units	LOQ	Result
Ochratoxin A	ND	ppm	0.010		Aflatoxin B1	ND	ppm	0.010	
Aflatoxin G2	ND	ppm	0.010		Aflatoxin B2	ND	ppm	0.010	
Aflatoxin G1	ND	ppm	0.010						

Metals								
Date Tested: 01/10/2024			Method: CB-SOP-027			Instrument:		

Analyte	Result	Units	LOQ	Result	Analyte	Result	Units	LOQ	Result
Arsenic	<LOQ	ppm	0.500		Cadmium	<LOQ	ppm	0.500	
Lead	<LOQ	ppm	0.500		Mercury	<LOQ	ppm	3.000	

Microbial								
Date Tested: 01/03/2024			Method:			Instrument:		

Analyte	Result	Units	LOQ	Result	Analyte	Result	Units	LOQ	Result
STEC (E. coli)	Negative				Salmonella	Negative			
L. monocytogenes	Negative				Yeast/Mold (qPCR)	Absence			

Residual Solvent								
Date Tested: 01/03/2024			Method: CB-SOP-032			Instrument:		

Analyte	Result	Units	LOQ	Result	Analyte	Result	Units	LOQ	Result
1-4 Dioxane	<LOQ	ppm	29		2-Butanol	<LOQ	ppm	175	
2-Ethoxyethanol	<LOQ	ppm	24		2-Methylpentane	<LOQ	ppm	87	
3-Methylpentane	<LOQ	ppm	87		2-Propanol	<LOQ	ppm	350	
Cyclohexane	<LOQ	ppm	146		Ether	<LOQ	ppm	350	
Ethylbenzene	<LOQ	ppm	81		Acetone	<LOQ	ppm	350	
Isopropyl Acetate	<LOQ	ppm	175		Methylbutane	<LOQ	ppm	350	
n-Heptane	<LOQ	ppm	350		n-Hexane	<LOQ	ppm	87	
n-Pentane	<LOQ	ppm	350		Tetrahydrofuran	<LOQ	ppm	54	
Acetonitrile	<LOQ	ppm	123		Ethanol	<LOQ	ppm	350	
Ethyl acetate	<LOQ	ppm	175		o-Xylene	<LOQ	ppm	81	
m+p-Xylene	<LOQ	ppm	163		Methanol	<LOQ	ppm	250	
Methylene Chloride	<LOQ	ppm	90		Toluene	<LOQ	ppm	67	

NT = Not tested, ND = Not detected; LOQ = Limit of Quantitation; <LOQ = Detected; >ULOL = Above upper limit of linearity; CFU/g = Colony forming units per 1 gram; TNTC = Too numerous to count

This product has been tested by CannaBusiness Laboratories using validated testing methodologies and a quality system. Values reported relate only to the product tested. CannaBusiness Laboratories makes no claims as to the efficacy, safety, or other risks associated with any detected or non-detected levels of any compounds reported herein. This Certificate shall not be reproduced except in full, without the written permission of CannaBusiness Laboratories. Photo is of sample received by the lab and may vary from final packaging. The results apply to the sample as received.



# Certificate of Analysis

## CANNABUSINESS LABORATORIES, LLC



*J. Hobgood*  
Laboratory Manager

Jamie Hobgood

01/10/2024 7:56 PM

SIGNATURE

DATE

NT = Not tested, ND = Not detected; LOQ = Limit of Quantitation; <LOQ = Detected; >ULOL = Above upper limit of linearity; CFU/g = Colony forming units per 1 gram; TNTC = Too numerous to count

This product has been tested by CannaBusiness Laboratories using validated testing methodologies and a quality system. Values reported relate only to the product tested. CannaBusiness Laboratories makes no claims as to the efficacy, safety, or other risks associated with any detected or non-detected levels of any compounds reported herein. This Certificate shall not be reproduced except in full, without the written permission of CannaBusiness Laboratories. Photo is of sample received by the lab and may vary from final packaging. The results apply to the sample as received.