



# Certificate of Analysis

## CANNABUSINESS LABORATORIES, LLC

**Customer:**  
Cornbread Hemp

Sample ID **230517001**  
Order Number **CB230517001**  
Sample Name **Full Spectrum CBD Capsules**  
**750mg**

Received Date **5/17/2023**  
COA Released **5/22/2023**

External Sample ID **0685**  
Batch Number **CH04022303-01**  
Product Type **Other**  
Sample Type **Other**

Comments

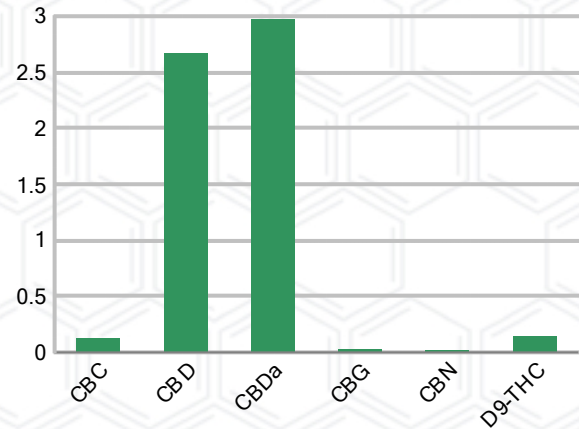
### CANNABINOID PROFILE

Analyte	LOQ (%)	% Weight	mg/g
CBC	0.01	0.127	1.268
CBD	0.01	2.674	26.74
CBDa	0.01	2.970	29.70
CBDV	0.01	ND	ND
CBG	0.01	0.026	0.258
CBGa	0.01	ND	ND
CBN	0.01	0.016	0.158
d8-THC	0.01	ND	ND
d9-THC	0.01	0.146	1.459
THCa	0.01	ND	ND
<b>Total Cannabinoids</b>		<b>5.958</b>	<b>59.58</b>
<b>Total Potential THC</b>		<b>0.146</b>	<b>1.459</b>
<b>Total Potential CBD</b>		<b>5.278</b>	<b>52.78</b>
<b>Total Potential CBG</b>		<b>0.026</b>	<b>0.258</b>
<b>Ratio of Total Potential CBD to Total Potential THC</b>			<b>36.15 : 1</b>
<b>Ratio of Total Potential CBG to Total Potential THC</b>			<b>0.18 : 1</b>

### SAMPLE IMAGE



### CANNABINOIDS % Weight



\*Total Cannabinoids refers to the sum of all cannabinoids detected.

\*Total Potential CBD = (0.877 x CBDa) + CBD. \*Total Potential THC = (0.877 x THCa) + THC. \*Total Potential CBG = (0.877 x CBGa) + CBG.

\*Total Potential THC/CBD are calculated to take into account the loss of an acid group during decarboxylation.



*J. Hobgood*  
Laboratory Manager  
SIGNATURE

Jamie Hobgood  
LABORATORY MANAGER

05/22/2023 9:29 AM  
DATE

This product has been tested by CannaBusiness Laboratories using validated testing methodologies and a quality system. Values reported relate only to the product tested. CannaBusiness Laboratories makes no claims as to the efficacy, safety, or other risks associated with any detected or non-detected levels of any compounds reported herein. This Certificate shall not be reproduced except in full, without the written permission of CannaBusiness Laboratories. Photo is of sample received by the lab and may vary from final packaging. The results apply to the sample as received.



# Certificate of Analysis

## CANNABUSINESS LABORATORIES, LLC

### Customer

Cornbread Hemp



**Sample Name:** Full Spectrum CBD Capsules 750mg

**Sample ID:** 230517001

**Order Number:** CB230517001

**Product Type:** Other

**Sample Type:** Other

**Received Date:** 05/17/2023

**Batch Number:** CH04022303-01

**COA released:** 05/22/2023 9:29 AM

### Potency (mg/g)

Date Tested: 05/17/2023

Method: CB-SOP-028

Instrument:

<b>0.146 %</b> Total THC	<b>5.278 %</b> Total CBD	<b>5.958 %</b> Total Cannabinoids	<b>59.58 mg/g</b> Total Cannabinoids
-----------------------------	-----------------------------	--------------------------------------	---

Analyte	Result	Units	LOQ	Result	Units
CBC (Cannabichromene)	0.127	%	0.010	1.268	mg/g
CBD (Cannabidiol)	2.674	%	0.010	26.74	mg/g
CBDa (Cannabidiolic Acid)	2.970	%	0.010	29.70	mg/g
CBDV (Cannabidivarin)	ND	%	0.010	ND	mg/g
CBG (Cannabigerol)	0.026	%	0.010	0.258	mg/g
CBGa (Cannabigerolic Acid)	ND	%	0.010	ND	mg/g
CBN (Cannabinol)	0.016	%	0.010	0.158	mg/g
D8-THC (D8-Tetrahydrocannabinol)	ND	%	0.010	ND	mg/g
D9-THC (D9-Tetrahydrocannabinol)	0.146	%	0.010	1.459	mg/g
THCa (Tetrahydrocannabinolic Acid)	ND	%	0.010	ND	mg/g

### Terpenoids

Date Tested: 05/18/2023

Method: CB-SOP-026

Instrument:

Analyte	Result	Unit	LOQ	Result	Unit
alpha-Bisabolol	0.168	mg/g	0.100	0.0168	%
alpha-humulene	0.166	mg/g	0.100	0.0166	%
alpha-pinene	<LOQ	mg/g	0.100	<LOQ	%
alpha-terpinene	<LOQ	mg/g	0.100	<LOQ	%
beta-caryophyllene	0.512	mg/g	0.100	0.0512	%
Beta-myrcene	<LOQ	mg/g	0.100	<LOQ	%
Beta-pinene	<LOQ	mg/g	0.100	<LOQ	%
cis-Nerolidol	<LOQ	mg/g	0.100	<LOQ	%
Camphene	<LOQ	mg/g	0.100	<LOQ	%
d-Limonene	<LOQ	mg/g	0.100	<LOQ	%
delta-3-Carene	<LOQ	mg/g	0.100	<LOQ	%
Eucalyptol	<LOQ	mg/g	0.100	<LOQ	%
gamma-Terpinene	<LOQ	mg/g	0.100	<LOQ	%
Geraniol	<LOQ	mg/g	0.100	<LOQ	%
Guaiol	<LOQ	mg/g	0.100	<LOQ	%
Isopulegol	<LOQ	mg/g	0.100	<LOQ	%
Linalool	<LOQ	mg/g	0.100	<LOQ	%
Ocimene (mixture of isomers)	<LOQ	mg/g	0.100	<LOQ	%
p-Isopropyltoluene (p-Cymene)	<LOQ	mg/g	0.100	<LOQ	%
trans-beta-Ocimene	<LOQ	mg/g	0.100	<LOQ	%
trans-Nerolidol	<LOQ	mg/g	0.100	<LOQ	%
Terpinolene	<LOQ	mg/g	0.100	<LOQ	%

### Pesticides

Date Tested: 05/18/2023

Method: CB-SOP-025

Instrument:

Analyte	Result	Units	LOQ	Result	Analyte	Result	Units	LOQ	Result
Acetamiprid	ND	ppm	0.010		Aldicarb	ND	ppm	0.010	
Azoxystrobin	ND	ppm	0.010		Bifenazate	ND	ppm	0.010	
Bifenthrin	ND	ppm	0.100		Boscalid	ND	ppm	0.010	
Carbaryl	ND	ppm	0.010		Carbofuran	ND	ppm	0.010	
Chlorantraniliprole	ND	ppm	0.010		Chlorpyrifos	ND	ppm	0.010	
Clofentezine	ND	ppm	0.010		Coumaphos	ND	ppm	0.010	
Daminozide	ND	ppm	0.010		Diazinon	ND	ppm	0.010	
Dichlorvos	ND	ppm	0.100		Dimethoate	ND	ppm	0.010	
Etofenprox	ND	ppm	0.010		Etoxazole	ND	ppm	0.010	
Fenhexamid	ND	ppm	0.010		Fenoxycarb	ND	ppm	0.010	
Fenpyroximate	ND	ppm	0.010		Fipronil	ND	ppm	0.010	
Flonicamid	ND	ppm	0.100		Fludioxonil	ND	ppm	0.010	
Hexythiazox	ND	ppm	0.010		Imazalil	ND	ppm	0.010	
Imidacloprid	ND	ppm	0.010		Malathion	ND	ppm	0.010	
Metalaxyl	ND	ppm	0.010		Methiocarb	ND	ppm	0.010	

NT = Not tested, ND = Not detected; LOQ = Limit of Quantitation; <LOQ = Detected; >ULOL = Above upper limit of linearity; CFU/g = Colony forming units per 1 gram; TNTC = Too numerous to count

This product has been tested by CannaBusiness Laboratories using validated testing methodologies and a quality system. Values reported relate only to the product tested. CannaBusiness Laboratories makes no claims as to the efficacy, safety, or other risks associated with any detected or non-detected levels of any compounds reported herein. This Certificate shall not be reproduced except in full, without the written permission of CannaBusiness Laboratories. Photo is of sample received by the lab and may vary from final packaging. The results apply to the sample as received.



# Certificate of Analysis

## CANNABUSINESS LABORATORIES, LLC

Pesticides								
Date Tested: 05/18/2023			Method: CB-SOP-025			Instrument:		

Analyte	Result	Units	LOQ	Result	Analyte	Result	Units	LOQ	Result
Methomyl	ND	ppm	0.010		Myclobutanil	ND	ppm	0.010	
Naled	ND	ppm	0.010		Oxamyl	ND	ppm	0.010	
Paclobutrazol	ND	ppm	0.010		Phosmet	ND	ppm	0.010	
Prallethrin	ND	ppm	0.010		Propiconazole	ND	ppm	0.010	
Propoxur	ND	ppm	0.010		Pyrethrin I	ND	ppm	0.010	
Pyrethrin II	ND	ppm	0.010		Pyridaben	ND	ppm	0.010	
Spinetoram	ND	ppm	0.010		Spiromesifen	ND	ppm	0.010	
Spirotetramat	ND	ppm	0.010		Tebuconazole	ND	ppm	0.010	
Thiacloprid	ND	ppm	0.010		Thiamethoxam	ND	ppm	0.010	
Trifloxystrobin	ND	ppm	0.010		Ethoprophos	ND	ppm	0.010	
Kresoxym-methyl	ND	ppm	0.010		Permethrins	ND	ppm	0.010	
Piperonyl Butoxide	ND	ppm	0.010		Spinosyn A	ND	ppm	0.010	
Spiroxamine-1	ND	ppm	0.010		AbamectinB1a	ND	ppm	0.010	
Spinosyn D	ND	ppm	0.010		Acephate	ND	ppm	0.010	

Mycotoxins								
Date Tested: 05/18/2023			Method: CB-SOP-025			Instrument:		

Analyte	Result	Units	LOQ	Result	Analyte	Result	Units	LOQ	Result
Ochratoxin A	ND	ppm	0.010		Aflatoxin B1	ND	ppm	0.010	
Aflatoxin G2	ND	ppm	0.010		Aflatoxin B2	ND	ppm	0.010	
Aflatoxin G1	ND	ppm	0.010						

Metals								
Date Tested: 05/19/2023			Method: CB-SOP-027			Instrument:		

Analyte	Result	Units	LOQ	Result	Analyte	Result	Units	LOQ	Result
Arsenic	<LOQ	ppm	0.500		Cadmium	<LOQ	ppm	0.500	
Lead	<LOQ	ppm	0.500		Mercury	<LOQ	ppm	3.000	

Microbial								
Date Tested: 05/19/2023			Method:			Instrument:		

Analyte	Result	Units	LOQ	Result	Analyte	Result	Units	LOQ	Result
STEC (E. coli)	Negative				Salmonella	Negative			
L. monocytogenes	Negative				Yeast/Mold (qPCR)	0	CFUs		

Residual Solvent								
Date Tested: 05/19/2023			Method: CB-SOP-032			Instrument:		

Analyte	Result	Units	LOQ	Result	Analyte	Result	Units	LOQ	Result
1-4 Dioxane	<LOQ	ppm	29		2-Butanol	<LOQ	ppm	175	
2-Ethoxyethanol	<LOQ	ppm	24		2-Methylpentane	<LOQ	ppm	87	
3-Methylpentane	<LOQ	ppm	87		2-Propanol	<LOQ	ppm	350	
Cyclohexane	<LOQ	ppm	146		Ether	<LOQ	ppm	350	
Ethylbenzene	<LOQ	ppm	81		Acetone	<LOQ	ppm	350	
Isopropyl Acetate	<LOQ	ppm	175		Methylbutane	<LOQ	ppm	350	
n-Heptane	<LOQ	ppm	350		n-Hexane	<LOQ	ppm	87	
n-Pentane	<LOQ	ppm	350		Tetrahydrofuran	<LOQ	ppm	54	
Acetonitrile	<LOQ	ppm	123		Ethanol	<LOQ	ppm	350	
Ethyl acetate	<LOQ	ppm	175		o-Xylene	<LOQ	ppm	81	
m+p-Xylene	<LOQ	ppm	163		Methanol	<LOQ	ppm	250	
Methylene Chloride	<LOQ	ppm	90		Toluene	<LOQ	ppm	67	

NT = Not tested, ND = Not detected; LOQ = Limit of Quantitation; <LOQ = Detected; >ULOL = Above upper limit of linearity; CFU/g = Colony forming units per 1 gram; TNTC = Too numerous to count

This product has been tested by CannaBusiness Laboratories using validated testing methodologies and a quality system. Values reported relate only to the product tested. CannaBusiness Laboratories makes no claims as to the efficacy, safety, or other risks associated with any detected or non-detected levels of any compounds reported herein. This Certificate shall not be reproduced except in full, without the written permission of CannaBusiness Laboratories. Photo is of sample received by the lab and may vary from final packaging. The results apply to the sample as received.





# Certificate of Analysis

## CANNABUSINESS LABORATORIES, LLC



*J. Hobgood*  
Laboratory Manager

Jamie Hobgood

05/22/2023 9:29 AM

SIGNATURE

DATE

NT = Not tested, ND = Not detected; LOQ = Limit of Quantitation; <LOQ = Detected; >ULOL = Above upper limit of linearity; CFU/g = Colony forming units per 1 gram; TNTC = Too numerous to count

This product has been tested by CannaBusiness Laboratories using validated testing methodologies and a quality system. Values reported relate only to the product tested. CannaBusiness Laboratories makes no claims as to the efficacy, safety, or other risks associated with any detected or non-detected levels of any compounds reported herein. This Certificate shall not be reproduced except in full, without the written permission of CannaBusiness Laboratories. Photo is of sample received by the lab and may vary from final packaging. The results apply to the sample as received.